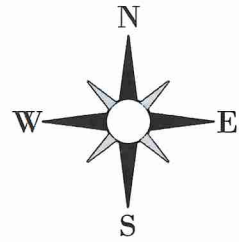


PLAT OF SURVEY

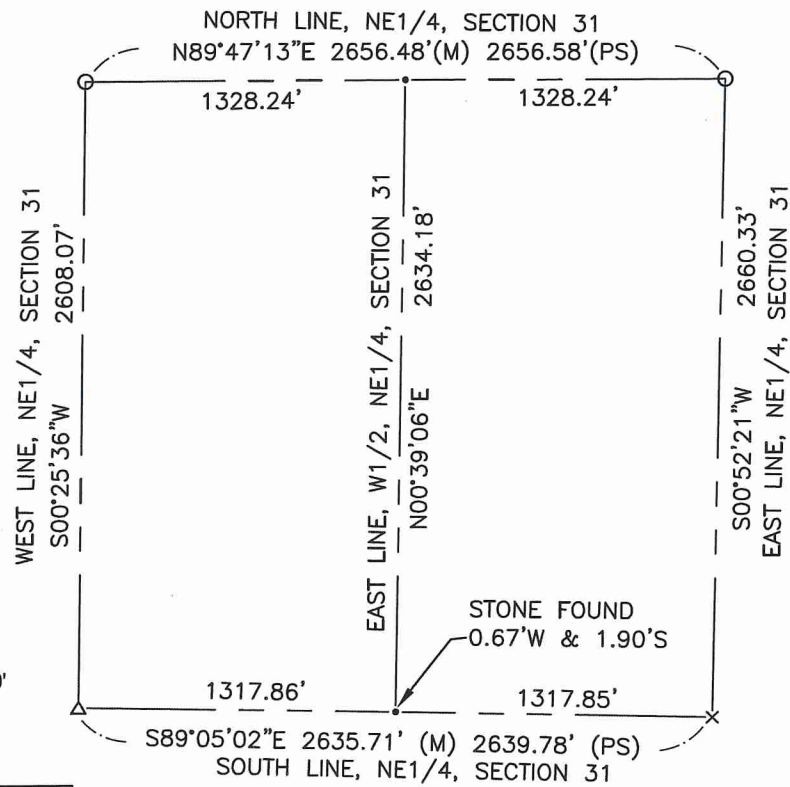
A SANITARY SEWER EASEMENT SITUATED IN THE NORTHEAST QUARTER OF SECTION 31 AND THE SOUTHEAST QUARTER OF SECTION 30, TOWNSHIP 9 SOUTH, RANGE 1 WEST, MILLCREEK TOWNSHIP, WILLIAMS COUNTY, OHIO.

DETAIL (NOT TO SCALE)

REFERENCE SURVEYS
VOL 16R PG 152
VOL 22R PG 018
VOL 22R PG 081
VOL 25R PG 086



0' 100' 200' SCALE 1" = 200'



COUNTY ROAD P
NORTH LINE, NE1/4, SECTION 31

N89°47'13"E 1134.04'

TRACT 12: 0.415 ACRES
TEMPORARY EASEMENT
(ABUTTING PERMANENT EASEMENT)

TRACT 11: 0.463 ACRES
PERMANENT EASEMENT
(ABUTTING RR RIGHT OF WAY)

N58°21'51"E 1206.54'
N58°21'51"E 1206.23'
S58°21'51"W 1302.95'

LEGEND

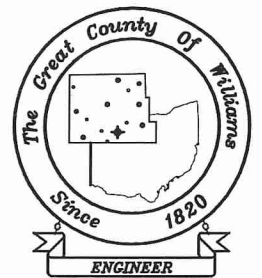
- SET 5/8 INCH REBAR WITH CAP
- FOUND IRON PIN OR PIPE
- ⊗ FOUND RAILROAD SPIKE
- × FOUND PK NAIL
- △ FOUND STONE
- POINT ESTABLISHED
- (M) MEASURED DISTANCE
- (PS) PREVIOUS SURVEY DISTANCE

Line Table		
Line #	Length	Direction
L39	120.27'	N01°01'55"E
L41	35.64'	S58°21'51"W
L42	156.64'	S58°21'51"W
L43	150.00'	S89°47'13"W
L44	21.00'	N00°12'47"W
L45	163.00'	N88°12'40"E
L46	141.93'	N58°21'51"E
L47	17.82'	S01°01'55"W
L48	15.01'	N00°12'47"W
L49	158.59'	N88°12'40"E
L50	147.55'	N58°21'51"E
L51	17.82'	S01°01'55"W
L52	194.20'	N89°47'13"E
L53	38.36'	S58°21'51"W
L54	17.74'	N00°39'06"E
L55	17.74'	N00°39'06"E
L56	17.58'	N00°12'47"W
L57	14.94'	N00°12'47"W
L58	82.00'	N89°47'13"E
L59	17.70'	N00°25'36"E
L60	17.70'	N00°25'36"E

Line Table		
Line #	Length	Direction
L61	77.86'	N00°25'36"E
L62	50.00'	N47°00'30"E
L63	50.00'	N69°43'12"E
L64	51.52'	N47°00'30"E
L65	51.52'	N69°43'12"E

DEED REFERENCES

- ① MATTHEW & JEANA COX
O.R. 250 PG. 937
- ② JOHN & MARSHA HANELY
VOL. 249 PG. 15
- ③ ORWAN & MARJORIE MILLER
VOL. 238 PG. 100



WILLIAMS COUNTY ENGINEERS

12953 COUNTY ROAD G
BRYAN, OHIO 43506
PHONE 419-636-2454
FAX 419-636-8687
WWW.WMSCOENGINEER.COM



I HEREBY CERTIFY THAT I HAVE SURVEYED THE PREMISES SHOWN ON THE PLAT ABOVE. ALL DIMENSIONS ARE SHOWN IN FEET AND DECIMALS THEREOF. SINCE THIS SURVEY DOES NOT INCLUDE A TITLE SEARCH, THERE COULD BE EASEMENTS OR OTHER ENCUMBRANCES UPON THE LAND WHICH ARE NOT SHOWN ON THIS SURVEY PLAT. IF THESE ARE REQUIRED, PLEASE FURNISH THE NECESSARY INFORMATION. THE BEARINGS AND DISTANCES SHOWN ON THE PLAT ABOVE ARE BASED ON NAD83 OHIO STATE PLANE COORDINATE SYSTEM, NORTH ZONE. THIS SURVEY HAS BEEN RECORDED IN VOL. 28R PAGE 325 OF THE WILLIAMS COUNTY SURVEY RECORDS.

Cody Frey
CODY FREY
WILLIAMS COUNTY ENGINEER
REGISTERED SURVEYOR NO. 8841
DATE: 04/28/2023

